

CN.	EN.
<p>产品综述 / 万磊莱姆石 (Lime Stone) 通过柔和而充满活力的色调, 呈现均匀的表面高贵“大理石”的美学效果。这种材料在12世纪的欧洲被广泛应用而闻名。拥有悠久历史的莱姆石 Lime Stone, 巧妙将艺术融入建筑设计中。莱姆石 Lime Stone由矿物石灰、大理石粉天然色素和无机填料开发而成。这种精选的天然原料 (矿物石灰基饰面), 赋予了万磊莱姆石极高的生态价值: 湿度的分散天然避免了霉菌和细菌的生长, 无需额外使用化学添加剂。</p>	<p>Overview / Vanlei Lime Stone, with its soft and vibrant color tones, presents an aesthetic effect of homogeneous surfaces of noble “marble”, a material that was widely used in Europe in the twelfth century and for which it is famous. Lime Stone has a long history of skillfully integrating art into architectural design. Vanlei Lime Stone is developed from mineral lime, marble powder natural coloring and inorganic fillers. This selection of natural raw materials (mineral lime-based finishes) gives Vanlei Lime Stone a high ecological value: the dispersion of humidity naturally avoids the growth of mold and bacteria, and no additional chemical additives are required.</p>
<p>主要成分 / 充分调配的熟石灰、精细大理石粉、无机颜/填料、纳米碳酸钙粉</p>	<p>Main ingredient / Fully blended slaked lime, fine marble powder, inorganic pigments/fillers, nano calcium carbonate powder</p>
<p>产品净重 / 具体见包装, 单组分25kg, 桶装</p>	<p>Net weight / See packaging, single component 25kg, drums</p>
<p>参考用量 / 3 - 3.5 kg / m² / 一次</p>	<p>Coating Rate / 3 - 3.5 kg / m² / 1 time</p>
<p>适用底材 / 莱姆石 Lime Stone可以应于大多数固体表面, 但需要确保表面彻底干燥和老化。如有必要, 使用特定产品重新表面处理。中密度纤维板表面的接缝应贴上胶带。混凝土砌块、砖砌体和类似背景等原始基材必须使用基础石膏进行涂抹, 以实现水平和垂直方向笔直的表面找平。 *如果墙面有裂缝, 请先应用合适的裂缝填充填料 (本品不具备作为填料的能力)。</p>	<p>Applicable Lime Stone can be applied to most solid surfaces, but it is necessary to ensure that the surface is thoroughly dried and aged. If necessary, resurface with specific products. Joints in MDF surfaces should be taped. Raw substrates such as concrete blocks, brick masonry and similar backgrounds must be coated with foundation plaster to achieve a straight horizontal and vertical surface leveling. *If there are cracks in the wall, apply a suitable crack filling filler first (this product does not have the ability to act as a filler).</p>
<p>准备工具 / 批刀、羊毛辊筒, 拉毛辊筒、砂磨机, 去尘毛刷</p>	<p>Preparation tools / Batch knives, wool rollers, bristle rollers, sanders, dusting brushes</p>
<p>色浆混合说明: / 使用天然石料颜色, 预调色。</p>	<p>Mixing Instructions / Use natural stone colors, pre-mixed with solid colors.</p>
<p>适用范围 / 适用于内外墙墙壁, 它没有接缝, 便于清洁和维护。</p>	<p>Scope of Suitable for interior and exterior walls, it has no joints and is easy to clean and maintain.</p>
<p>配套产品 / 万磊渗透底漆+万磊莱姆石+万磊无痕罩面漆</p>	<p>Complementary products / Exterior transparent permeable primer + Limestone + Topcoat</p>



29°釉质柔光光泽, 温润石质
29° glaze with soft luster and Warm stone texture.



独家材料, 独家自然倒角纹理, 纯意式石材肌理感。
Exclusive materials, exclusive natural chamfered texture, pure Italian stone texture feeling.



通体液态石材, 冰冷质感。
Liquid stone through and through. Ice cold texture.



纯天然材质, 0添加0掺和, 100%原色
Pure natural material 0 added 0 adulterated, 100% original color.



师法自然。无任何有机合成物, 只取自然界现存的色系。
Teach nature. No organic synthetics. Only take the existing color system in nature.



触感/自带滑面手感, 丰满的不像实力派。
Tactile/self-smooth surface feel, plump unlike a powerhouse.

佛山市南海万磊建筑涂料有限公司
Foshan City Nanhai Wanlei Building Paint CO., LTD



广东生产基地 (代码FS)
佛山市南海区狮山镇松岗万石管理区象头岗万石村工业路2号
广州分公司
广州市荔湾区羊城装饰材料市场172号

广西生产基地 (代码QT)
广西壮族自治区贵港市覃塘区产业园甘化园区
南宁分公司
广西壮族自治区南宁市兴宁区快环建材市场

注意
公司根据产品技术和发展需要, 有权对产品配方进行更新升级, 而不对外另行公布, 请以最新样板册颜色为准, 不便之处, 敬请原谅!

4000-147-187 www.fswanle

PRODUCT

100% 莱姆石
100% Limestone Paint



YLMS - 241101

100%100% 莱姆莱姆石石 LILIMESTONEME STONEPAINT PAINT



100%莱姆石
100% Limestone Paint

施工指南 Construction Guide



01. 符合以上基面要求，辊涂万磊金装白色/透明底漆（1/2遍）
Comply with the above substrate requirements, roll on Vanlei Gold white/clear primer (1/2 times).



02. 用不锈钢批刀涂抹一层万磊莱姆石主材（厚度为一粒砂约2mm）
Apply a coat of Vanlei limestone main with a stainless steel batch knife (thickness of one grain of sand approx. 2mm)



03. 使用专用滚筒施工拉毛纹理
Apply brushed texture with specialized rollers



04. 平批第二道，表面收光，待自然孔洞生成，表干后进入打磨工序
Flat batch of the second course, the surface finish, to be natural hole generation, table drying into the sanding process



05. 干燥后，使用80# - 180# - 320#砂纸依次对表面进行打磨，至平整后清除灰尘。
After drying, use 80# - 180# - 320# sandpaper to sand the surface sequentially until flat and remove dust.

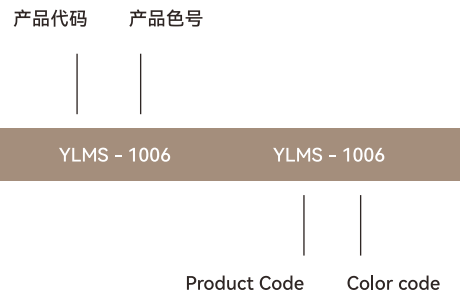


06. 罩面层（推荐使用无痕罩面），均匀辊涂两遍
Cover coat (non-marking cover coat is recommended), rolled evenly two times

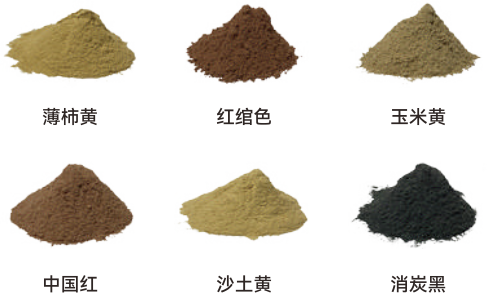


07. 罩面完成干透后，使用2000目抛光砂纸去掉毛刺增加手感。
After the cover is complete and dry, use 2000 grit polishing sandpaper to remove burrs to increase feel.

色彩系统 Colour System



本品为纯天然石粉预制不可调色
This product is pre-made with pure natural stone powder and is not color adjustable.



万磊公众号
Official Accounts



小程序
Applet



施工教程
Construction Tutorial

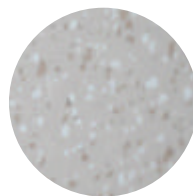


VR全景
VR panorama

0

100%莱姆石,师法自然,纯天然材质
100% Lime stone, mastered by nature, pure natural material

100% | 莱姆石
Limestone Paint



CN.

大自然是万磊永恒的股东之一。

天然的纹理才是**最好看, 最经典, 最永恒的。**

我们忠于自然界的原材料, 取材天然矿物石粉, 100%承诺并无掺入异类有机色浆或额外的防腐剂。

EN.

Nature is one of Vanlei's eternal shareholders.

Natural textures are **the most beautiful, the most classic, and the most eternal.**

We are loyal to the raw materials in nature, using natural mineral stone powder, and 100% promise that no foreign organic color paste or additional preservatives are added.

莱姆石 - 雨果 / Hugo

HLMS - 2001

品真石·莱姆石
For the real Limestone

色卡颜色与实际材料颜色有少许差异为正常现象
It is normal for the color card color to differ slightly from the actual material color



vanlei万磊®

100% | 莱姆石
Limestone Paint



莱姆石 白奶酪 / 地中海式的经典品类
Limestone Fromage blanc / The classic Mediterranean category

YLMS - 白奶酪 原色



莱姆石 雨果 / 最多人选择的奢华珍品
Limestone Hugo / The most popular choice for luxury treasures

HLMS - 2002 + 寒叠冰晶 (200g)



莱姆石 棕砂 / 最难被开采的殿堂级莱姆石
Limestone Sable brun / The most difficult to mine hall of fame limestone

HLMS - 2003 + HLMS - 2004



寒叠冰晶是一种额外添加的天然贝壳类物质, 200g/瓶, 独立包装销售。
Shell is an extra added natural shellfish substance, 200g/bottle, sold in individual packages.



vanlei万磊®

100% | 莱姆石
Limestone Paint



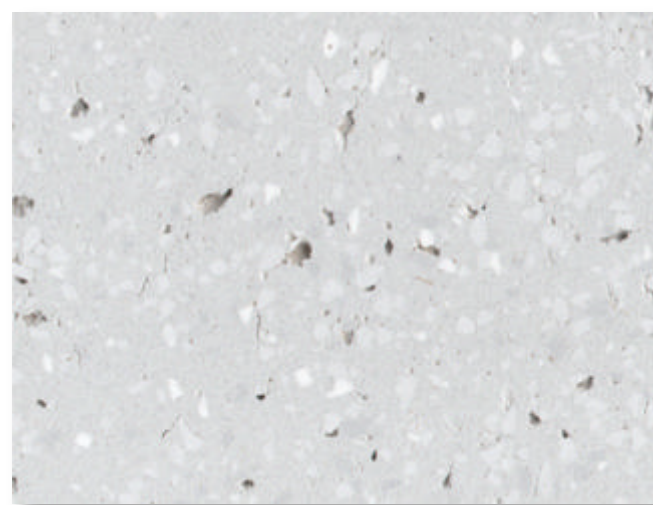
莱姆石 - 雨果 / Hugo

HLMS - 2005



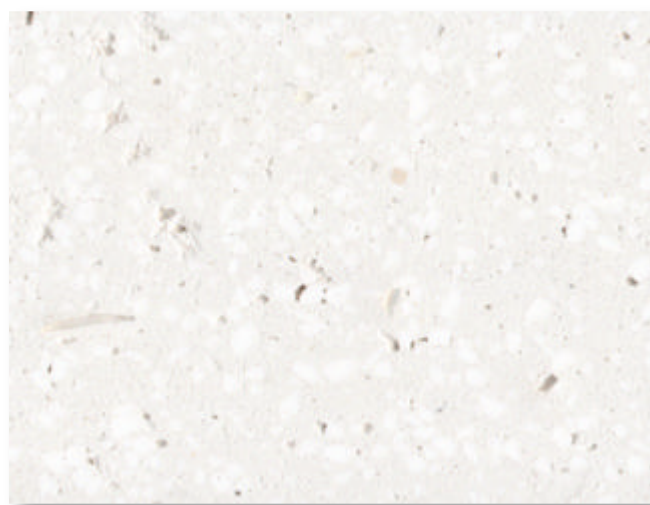
莱姆石 - 雨果 / Hugo

HLMS - 2006



莱姆石 - 雨果 / Hugo

HLMS - 2007



莱姆石 - 白奶酪 YLMS - 白奶酪 + 寒叠冰晶 (200g)



品真石·100%莱姆石
Limestone



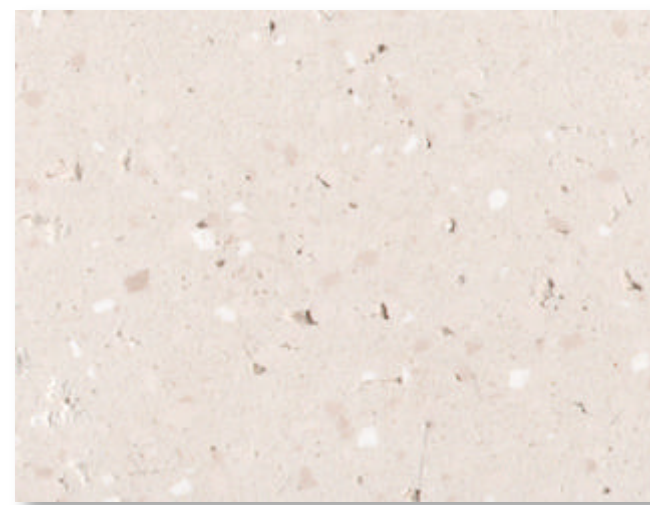
寒叠冰晶是一种额外添加的天然贝壳类物质，200g/瓶，独立包装销售。
Shell is an extra added natural shellfish substance, 200g/bottle, sold in individual packages.



0添加0掺和，29°釉质柔光光泽，温润石质。
0 additions and 0 adulteration, 29° glaze with soft luster and warm stone texture.

vanlei万磊®

100% | 莱姆石
Limestone Paint



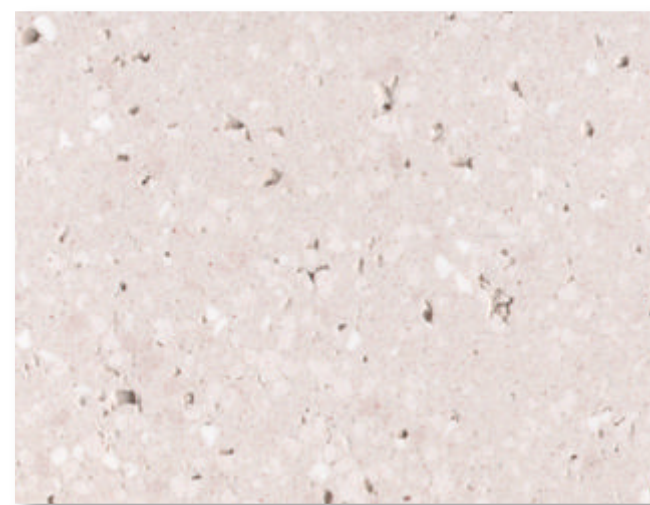
莱姆石 - 雨果 / Hugo

HLMS - 2008



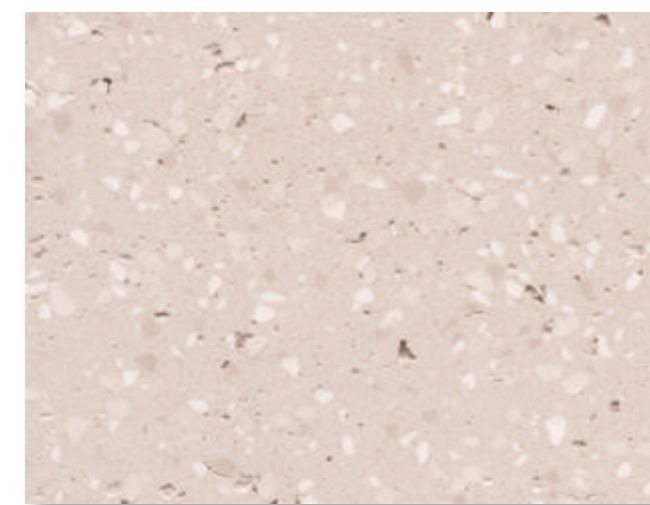
莱姆石 - 雨果 / Hugo

HLMS - 2009



莱姆石 - 雨果 / Hugo

HLMS - 2010



莱姆石 - 雨果 / Hugo

HLMS - 2011



品真石·莱姆石
For the real Limestone

色卡颜色与实际材料颜色有少许差异为正常现象
It is normal for the color card color to differ slightly from the actual material color